

# T7350

# PDA Configuration

## QUICK START GUIDE

## SETUP

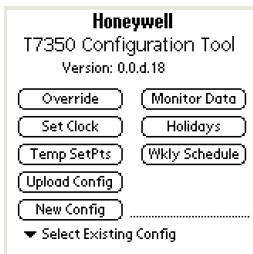
1. Connect PDA to 50000083-001 Thermostat Interface Module (TIM) using PDA serial cable.
2. Ensure the PDA serial cable and the PDA remain connected.
3. Connect T7350 to TIM using RJ-45 cable.

## Novice Navigation

The standard (novice) mode guides the user through the essential configuration screens. Next and Back buttons guide the user from screen to screen.

**NOTE:** The current desired T7350 configuration determines the context of screen displays. See Fig. 1 through 5 for sample screens.





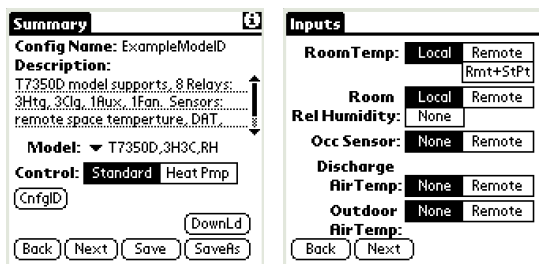
**Fig. 1. Opening screen.**

**Table 1. Opening Screen Options.**

Function	TIM Req'd	Description
Override	X	Manually override digital and analog outputs. Enable/Disable output delays.
Set Clock	X	Set T7350 real time clock date/time.
Temp SetPts	X	Upload current setpoints. Modify values and download to the T7350.
Upload Config	X	Upload configuration and display results.
New Config		Create new configuration set.
Monitor Data	X	Monitor T7350 diagnostic data.
Holidays	X	Upload, modify, download Holiday schedule
Wkly Schedule	X	Upload weekly schedule. Select, create or save schedule and download.
Select Existing Config		Select an existing configuration set and display the results.

**Table 2. Novice Navigation Screens.**

Function	Description
Summary	Basic data with access to functions such as Save and DownL(oad).
Inputs	Configure T7350 sensor inputs.
Cooling	Configure cooling parameters.
Heating	Configure heating parameters.
Outputs	Configure T7350 outputs.
Fan	Configure fan control.
Wkly Schedule	Select, create, save, name weekly schedule.
SetPoints	Configure temperature setpoints.



**Fig. 2. Summary and Inputs.**

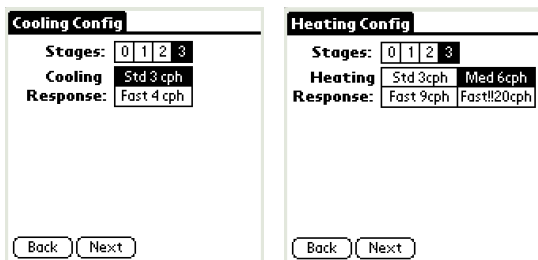


Fig. 3. Cooling and Heating.

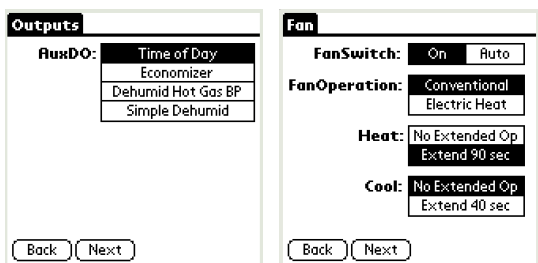


Fig. 4. Outputs and Fan.

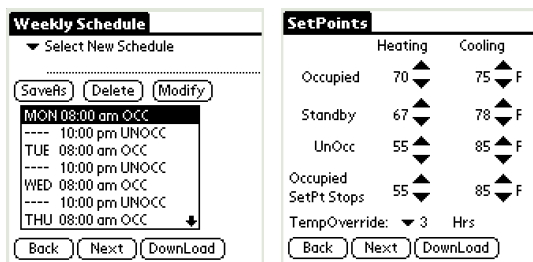


Fig. 5. Weekly Schedule and Setpoints.

# Advanced Navigation

Advanced navigation is designed for expert level users. It allows direct access to any thermostat configuration screen:

1. Tap either the title tab or the silk screen menu icon (see Fig. 6).
2. The tool replaces the title tab with the Advanced Navigation menu (see Fig. 7).
3. Perform desired tasks. See Table for available functions.



Fig. 6. Tap the menu icon.

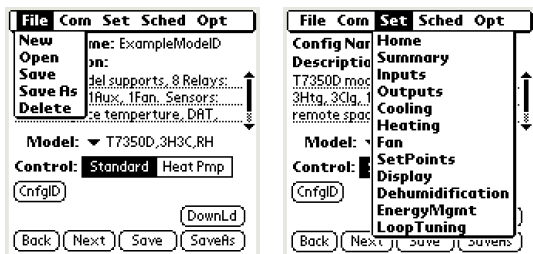


Fig. 7. Advanced Navigation menu.

**Table 3. Advanced Functions.**

<b>Menu</b>	<b>Function</b>	<b>Description</b>
File	New	Create named T7350 configuration.
	Open	Select and display existing T7350 configuration.
	Save	Save current configuration with existing name.
	Save As	Save current configuration with new name.
	Delete	Delete an existing configuration.
Com (requires TIM)	Download	Download current configuration to T7350.
	Upload	Upload configuration from T7350 and display the details.
	Monitor	Monitor T7350 diagnostic data.
	Set Clock	Set real-time clock date and time.
	Calibrate	Monitor and calibrate room temperature.
	Override	Manually override outputs. Enable/Disable output delays. Disables minimum on/off time delays for relay outputs and sequential start delay.

**Table 3. Advanced Functions. (Continued)**

<b>Menu</b>	<b>Function</b>	<b>Description</b>
Set	Home	Return to opening screen. Saves existing configuration first.
	Summary	Display summary screen. See Fig. 2.
	Inputs	Configure sensor inputs.
	Outputs	Configure output options.
	Cooling	Configure cooling mode parameters.
	Heating	Configure heating mode parameters.
	Fan	Configure fan options.
	SetPoints	Configure and download temperature setpoints.
	Display	Configure T7350 display and user interface parameters.
	Dehumidification	Configure dehumidification high limits.
	EnergyMgmt	Configure energy management parameters, including: power restoration sequential start delay and demand limit control bump.
LoopTuning	Configure PID parameters.	

**Table 3. Advanced Functions. (Continued)**

Menu	Function	Description
Sched	Wkly Sched	Select, create, save, or download a weekly schedule.
	Recovery	Configure startup recovery parameters.
	Holiday	Select, create, save, or download a holiday group.
	DayLightSav	Configure Daylight Saving start and end date/time.
Opt	User Pref	Set preferences, including: units (°C/°F), OS alert message (on/off), and lock defaults (on/off).
	About	Application version number and contact information.

## FREQUENTLY ASKED QUESTIONS

### **How do I exit the configuration application?**

Tap the silk screen Home, or press a dedicated PDA function pushbutton. The current configuration is saved and the configuration application is closed.

### **I do not like some of the default configuration settings. How do I change them?**

Default settings exist for: basic thermostat (e.g.: °F/°C), Weekly Schedule, and Holiday Schedule configurations. Use the following command sequence: Opt, User Pref, Change Lock Defaults to No, tap OK. The user can now modify and save defaults.



## **How do I return to the Application Opening Screen?**

Use the following command sequence: tap the title tab, Set, Home. Note: All opening screen functions are available through the Novice or Advanced screen navigation.

## **How do I upload a thermostat configuration into an existing config file name?**

Use the following procedure to save an upload over top of an existing configuration:

1. Upload the configuration from the T7350.
2. Delete the existing file using: File, Delete.
3. Save the upload data using: SaveAs.

## **How do I connect the PDA Configuration Tool to the T7350 Thermostat?**

Use the Honeywell TIM (part no.: 50000083-001) to facilitate the connection between the PDA serial cable DB9 (not included) and the T7350 RJ Jack.

## **How do I copy/modify an existing configuration file?**

Use the following procedure:

1. Load the existing configuration: File, Open, [existing configuration name].
2. Save file under new name: SaveAs, [enter new name], SaveAs.
3. Make appropriate configuration changes.
4. Save the new file: File, Save.

## **How do I exit the output manual override mode?**

While in manual override mode, the lower left corner of the PDA screen displays "Manual Override". Tap anywhere on the screen and the override mode is deactivated in 60 seconds.

**Is it possible to install the configuration tool on a PDA not listed on the release note compatibility list?**

No.

**I drained the PDA batteries and lost my saved configuration files. Is it possible to restore these files from a saved location?**

One of two methods can work:

- Uploading the configuration from a properly configured T7350. This recovers all but the given configuration name and corresponding holiday names.
- Regular use of the HotSync<sup>®</sup> function to back up data to a PC saves T7350 configurations. In the case of a battery failure, the Palm<sup>™</sup> Desktop application automatically restores the saved configurations at the next HotSync event from the StatDbFile-HIRW.PDB file.



*HotSync is a registered trademark of PalmSource, Inc.*

*Palm is a trademark of PalmSource, Inc.*

# Honeywell

---

## **Automation and Control Solutions**

Honeywell International Inc.  
1985 Douglas Drive North  
Golden Valley, MN 55422

Honeywell Limited-Honeywell Limitée  
35 Dynamic Drive  
Scarborough, Ontario  
M1V 4Z9

63-2606 B.B. 12-03

Copyright © 2003 Honeywell International Inc.

All Rights Reserved



Printed in U.S.A. on recycled paper containing at least 10% post-consumer paper fibers.

[www.honeywell.com](http://www.honeywell.com)